



The Green Sheet

Central Pennsylvania Golf Course Superintendents Association

Volume 18 Issue 8

Founded ~ April 11, 1939

November/December 2011



*Happy Holidays
to you and your family
from the
CPGCSA
Board of Directors*

2012 Central Penn GCSA Board of Directors

President:

Barry L. Bollinger - Rich Valley Golf Club
turfdrpa@yahoo.com

Vice President:

Rebecca J. Matis - Golf Club at Felicita
turfgirl03@aol.com

Secretary/Treasurer:

Alan FitzGerald - LedgeRock Golf Club
alan@ledgerockgolf.com

Past President:

Faron J. Stoops - Waynesboro Country Club
fstoops@comcast.net

Directors:

Brian Ahrens - Reading Country Club
Ahrensb20@aol.com

Donald G. Dodson - Hunt Valley Golf Club
ddodson392@aol.com

Timothy A. Hill - Foxchase Golf Club
foxgreens@yahoo.com

Grant Huffman - Heritage Hills Golf Resort
kappasig4@hotmail.com

Chad R. Oxenreider - Flying Hills Golf Course
grns mower@aol.com

Matthew S. Turner - Conestoga Country Club
turnerm@conestogacc.com

Mid-Atlantic USGA Update

Preparation For Winter Is Well Underway

By Keith Happ,
December 12, 2011



(L) During the winter and early spring, the sun is much lower in the southern sky. Take the time during the winter months to evaluate sun angles in essential areas of the course. (R) Topdressing to protect the turf prior to winter weather can provide a level of insulation and a degree of additional free drainage for the crowns (the growing points) of the turf.

How long is your winter work check list? Most golf course superintendents have almost completed their preparation for the upcoming winter months. Preparing the turf for dormancy and freeze/thaw cycles takes time and should not be taken lightly. There are several strategies that can be employed to maximize turf health and minimize the potential for problems next spring. The following are some key examples.

- **Aeration** should be conducted on greens, tees and fairways. These are the most important areas for play, and as such should be prepared in a proactive manner. Not having the opportunity to do so can compromise the turf's ability to tolerate winter conditions.
- **Topdress** heavily where possible! Topdressing applications provide a degree of insulation near the crowns of the turf, while providing a level of free drainage. The degree to which topdressing is applied does vary, and you can always contact us to discuss your particular issue. How-

.....Continued on page 2.....

Inside This Issue

| | |
|------------------------------|--------|
| President's Message | Page 2 |
| Membership News | Page 3 |
| GCSAA Delegates Report | Page 4 |
| CPGCSA Sponsors & Supporters | Page 8 |

President's Message

Hello Central Penn. I am excited to serve our association as President and keep us moving forward as a group. I would like to thank and congratulate Mr. Faron "Grandpa" Stoops for his dedicated service and commitment to the CPGCSA, and on becoming a Grandpa. I knew I saw some grey hair at the last meeting!

I would also like to welcome and congratulate our newest board member, Grant Huffman.

The association is in good financial shape and is continuing to grow. We really do need more participation at our events though. Come on out to a meeting to learn, network, play some golf, and most important, have some fun. **COME ON!!!!!!**

If anyone would like to host a meeting this coming year please let me know as the schedule hasn't been completed yet.

This is the time of year to take some much needed time off so make sure you do it! Make your family become sick of you. After the past two seasons from hell I guarantee you deserve it. Take some time to attend the educational opportunities as well. There are plenty out there and they all offer something new to learn.

During the upcoming year I hope to see some new faces and get to know some people better. I hope everyone has a wonderful holiday season!!!!!!

Barry Bollinger

USGAcontinued from page 1

ever, targeting at least 100 to 200 lbs of topdressing per 1,000 square feet is a great start. There are returns of scale that have to be considered, and the priorities should begin with the greens, tees, approaches and then, if funds are available, the fairway turf.

- **Disease Control** procedures should be conducted. Most courses in the Mid-Atlantic Region treat to control snow molds (pink and gray). The application is made as late in the year as possible to receive season-long control. When these procedures are implemented, other strategies, such as mowing, need to stop. Superintendents don't want to mow off the protection just to appease a small group of golfers who think the greens should be prepared more aggressively during the winter months. If absolutely necessary, roll the surfaces rather than mow dormant grass! At some operations, anti-desiccant sprays are used to protect the turf from drying winter winds. Again, mowing should not be conducted until such time that the turf begins to grow consistently, i.e. next spring!
- **Spot Maintenance** – areas that need extra work. Late fall is an excellent time to catch up on some of the isolated maintenance needs throughout the course. For example, aggressively aerate all **high traffic areas** to address compaction damage. While the aeration holes are present, introduce ryegrass seed to improve turf density and offer a level of improved traffic tolerance. In most instances the soils are still warm enough for ryegrass seed to germinate. Leaf clean-up should be completed prior to introducing seed to these areas.
- **Tree Work.** Don't forget to evaluate sun angles in all critical areas of the course. Where possible, **prune or harvest unnecessary trees and undergrowth.** Provide every opportunity to start the year off with the best possible growing conditions. Progress can be made even if only one or two areas of need are addressed -- anything will help!
- **Winter Play Policy.** Has your course determined what its winter play policy will be? Will the greens be closed to play when the grass goes dormant (which is happening now)? Will there be winter/alternate greens and tees? Will the course be open for play, recognizing (and budgeting for) the traffic damage that can occur when greens and tees are played during the winter? There are no easy answers to this issue; each course must determine what is best for them. Nonetheless, it is good to discuss that policy now.

The Mid-Atlantic Region agronomists are part of our agronomic support team. If you have a question or concern, give us a call or send an e-mail. You can reach Stan Zontek (szontek@usga.org) and Darin Bevard (dbevard@usga.org) at 610-558-9066 or Keith Happ (khapp@usga.org) at 412-341-5922.

President

Faron J. Stoops
Waynesboro Country Club
717-762-6370
fstoops@comcast.net

Vice President/Scholarship

Barry Bollinger
Rich Valley Golf Course
717-691-8805
turfdpa@yahoo.com

Secretary/Treasurer

Rebecca Matis
Felicitia Golf Resort
717-599-5703
turfgirl03@aol.com

Past President/Social

Stephen J. Ludwig, CGCS
717-495-0679
stephen.ludwig@comcast.net

Education/Chapter Delegate/Bylaws

Alan FitzGerald 2011
LedgerRock Golf Club
610-777-9890
alan@ledgerrockgolf.com

Nominations/Scholarship

Donald G. Dodson 2011
Hunt Valley Golf Club
410-527-3307
ddodson392@aol.com

Education/Media/Public Relations

Chad R. Oxenreider 2012
Flying Hills Golf Club
610-775-1903
grns mower@aol.com

Golf

Matthew S. Turner 2012
Conestoga Country Club
717-394-5548
turnerm@conestogacc.com

Brian L. Ahrens 2013

Reading Country Club
610-779-8888
brian@readingcountryclub.com

Membership

Timothy A. Hill 2013
Foxchase Golf Club
717-336-3847
foxgreens@yahoo.com

Affiliates

Phil Easton 2012
717-464-2707
peaston@agriumat.com

Bob Beyer 2013

717-873-0899
rbeyer@Harrells.com

Executive Director/Newsletter Editor

Wanda S. Fry
717- 279-0368
cpgsa@hotmail.com

PAST PRESIDENTS

George Morris
Ed Tabor
Riley E. Heckert
Richard T. Funk
Harry L. Latshaw
Daniel L. Snowberger
Charles A. Barley
Richard Wilt
Fred N. Baker
Richard J. Suttles
John J. Boyd
Y. Lewis Payson
C. William Black, CGCS
Dwight H. Brubaker
Byron F. Krull
Michael Wilt
Charles H. Cadiz, CGCS
Kenneth R. Dietrich, CGCS
Michael C. Hair
Cameron G. Henderson
James N. MacLaren
David P. Portz, CGCS
John P. McCormick
David C. Weitzel, CGCS
Fred Heinlen
Terry L. Wueschinski, CGCS
Greg Borzok
Gregory C. Fantuzzi, CGCS
James W. Jones
William G. Wall
Robert Beyer, CGCS
Jeffrey L. Fry, CGCS
John A. Chassard
David M. Rafferty
Anthony P. Goodley, CGCS
Samuel R. Snyder, CGCS
John Dougherty
H. Jim Loke, CGCS
John L. Gehman
Theodore S. Zatzewski
Thomas C. Oesper, CGCS
Daniel W. Achenbuech
William E. Brooks
William P. Ramsey
Faron J. Stoops
John M. Colo
Daniel Brickley
Matthew W. Strader
Stephen J. Ludwig, CGCS

Membership News

The following individual has applied for membership into our association. If there are no written objections within the next seven days, they will be accepted into CPGCSA at the next meeting.

Kathy Conard.....Class AF
Sales Rep, Harrell's

If you know of anyone who is interested in membership into the association, please have them contact Tim Hill at 717-336-3847.

Membership information is also available on the Central Penn website at:
www.cpgcsa.org

Congratulations to:

"Grandpa" Faron Stoops. Granddaughter Mika was born on October 23, 2011.

Golf Results

The final CPGCSA tournament for the year was held at Carlisle Country Club. We want to thank Greg Fantuzzi and his staff for hosting this tournament. The golf course was in excellent shape considering the fact that it had rained almost 2 inches on the previous day. It was very educational as Greg and his staff was going thru the final stage of converting from Perennial Ryegrass fairways into Bentgrass fairways. Anyway, thank you Greg and here are the results from the tournament:

The format was 2 Best ball gross and net.

| | |
|-----------------------------|-----------------------------|
| Gross | |
| 1 st Place - 151 | 2 nd Place - 152 |
| John Colo | Matthew Turner |
| Tom Czaus | Brad Helcoski |
| Jason Johnson | Brian Ahrens |
| Mark MacDonald | Joe Sellers |

| | |
|-----------------------------|-----------------------------|
| Net | |
| 1 st Place - 125 | 2 nd Place - 126 |
| Dave Dewitt | Tim Hill |
| Andy Sheehan | Mike Lutz |
| Chad Oxenreider | Bryant Rousch |
| Scott Keener | |

Longest Drive
Brad "Pee Wee" Helcoski

| | | |
|-----------------------|--------------|-------|
| Closest to Pin | | |
| #6 | Scott Hunter | 11'4" |
| #13 | Scott Keener | 13'5" |
| #17 | Andy Sheehan | 12'4" |

The Perfect Course. 1
WE'VE GOT THE SWING OF IT.

Fisher & Son
COMPANY, INC.

800-262-2127
www.fisherandson.com

1 Beautiful courses come naturally with Fisher & Son. As the Mid-Atlantic's largest and oldest independent distributor of products and services for golf professionals and the "green industry," you can depend on our experience, knowledge and 100% guarantee to deliver the results you want, and your players will appreciate. From turf seed and fertilizers to plant protectants and soil testing, we're dedicated to offering a wide range of trusted solutions with scientifically tested products. All to make your course hole-in-one perfect for every round of play.

SATISFACTION 100% GUARANTEED

For more information please visit our website or call us at 1-800-262-2127. The perfect course is just a short putt away.

Golf Courses

Genesis

Providing the highest level of products and support to the green industry

Fertilizers, Seed and Plant protectants ready for pick-up or quick delivery

Contact your local Genesis Representative today!

| | |
|---|---|
| Paul Wickey South Central Pennsylvania 717-439-4441 paul@genesturfgrassinc.com | Dan Davis Central Pennsylvania 717-994-7344 danny@genesturfgrassinc.com |
| Jim MacLaren Northeast Pennsylvania 570-499-6408 jim@genesturfgrassinc.com | Jon MacNamara Central Penn Lawncare and Golf 717-885-3255 jonathan@genesturfgrassinc.com |

For more information visit www.GenesisTurfgrassInc.com

GCSAA Chapter Delegates Report

By Alan FitzGerald

“Ask and you shall receive” was the theme for the 19th GCSAA Chapter Delegates Meeting, where the GCSAA Board of Directors, 2012 board candidates, and 89 delegates representing 92 of GCSAA’s 100 affiliated chapters, convened at the Hilton Kansas City Airport October 29-30.

Association executive staff and elected leaders solicited feedback and frank discussion on a multitude of topics and charged attendees to communicate with their respective chapters upon their return home. GCSAA Vice President Sandy Queen, CGCS set the tone in his welcome to the delegates saying “we want to hear from you. It is vital that you share this information with your chapters.”

Value of Membership

GCSAA President Bob Randquist, CGCS repeated a message that he has emphasized throughout his term in office: GCSAA must enhance the value of membership and demonstrate it to the members. He outlined several new programs implemented in the past year including expansion of the field staff program, creation of a new job board, growth of social media, a new website, new resources to enhance sustainability of the golf facility and the online Self Assessment Tool to measure member competency and identify resources to facilitate improvement. Some great news President Randquist also announced is that GCSAA webcasts will be free to members beginning in November. Randquist advised that members can expect more value for their membership in the near future, including:

- Expanded On-Demand Courses
- Special member access for research and information from the Applied Turfgrass Science publication.
- A nutrient management template is being developed. Publishing the fourth survey of the GCSAA Environmental Profile: Energy Use and Conservation.

GCSAA continues to be vigilant in its efforts to keep the association strong for future generations by focusing on:

- Growing and diversifying revenue streams
- Supporting industry efforts to grow the game of golf
- Continuing to communicate the value of the association and members to golfers and employers
- Creating a greater affiliation between members and The Environmental Institute for Golf (EIFG) Continuing to build engagement at the chapter level

This discussion and an open town hall meeting format generated many suggestions as to how GCSAA might increase and demonstrate value, with many ideas focused on delivering value at the chapter level through field staff and enhanced use of technology.

Field Staff Expansion

Randquist elaborated on the field staff program, noting that four regions (Florida, Great Lakes, South Central, Southwest) were staffed and two more would be assigned by the end of 2011 (Northeast, Northwest). All nine GCSAA regions are slated to have resident field staff by the end of 2013. The mission of field staff is to assist GCSAA affiliated chapters to become more effective and to fully comprehend the services provided by GCSAA for the benefit of all members. Steve Randall, Senior Manager of Chapter Outreach, shared with the delegates that while each chapter has its own unique challenges and goals the overall objectives for the program are:

- Assist chapters with developing and implementing best practices.
- Facilitate strategic planning sessions.
- Help chapters improve their financial standing.
- Be a two-way communication vehicle to strengthen the relationship between GCSAA and the chapter.
- Enhance the profession by working with allied organizations on advocacy issues. Assist chapters with membership recruitment and retention.

He said the directive for the program remains unchanged: to create a greater link between the association and its chapters – something he believes is happening “to an even greater degree” than he had expected this early in the program. GCSAA staff also provided several examples of the activities where field staff have helped to facilitate chapter effectiveness through association programs including strategic planning, advocacy, membership growth and allied association relations. A roundtable discussion was conducted among smaller groupings of delegates to examine areas for opportunity and measures of

success for field staff. The feedback was loud and clear that the program had great potential to create an even greater impact in the future.

Member Standards: 10 Years Later

President Randquist informed the delegates of a recently formed group that will conduct a strategic review of the GCSAA Membership Standards which will take a strategic look at the impacts the membership standards have had on the association and its members. It has been 10 years since members approved the implementation of member standards. Randquist, who served on the group that coordinated the development of those standards, said the current board felt the review was prudent, but not based on any preconceived notions.

“Ultimately there may be no changes to the standards,” Randquist said. “But the board felt enough time had passed since the implementation that we could get some feedback on the impact. We selected the advisory group, but that is as far as we went. What they find will not be directed by the board.”

The group will review the impact of the standards to determine if the goals are being met, if there have been any unintended consequences, and make recommendations to the board on a future course of action in regards to standards. It will feature a diverse cross section of the membership including certified members, Class A, SM and C representatives. There is no firm deadline for the group’s report, but an update on the group’s progress will be delivered at the 2012 Chapter Delegates Meeting. The newly formed Membership Standards Advisory Group’s mission and purpose will be to:

- Determine if the original goals of PDI have been, or are being met;
- Determine if GCSAA Membership Standards have had any unintended consequences for the association and its members that should be addressed moving forward

Make recommendations on a future course of action for the Association in regards to Membership Standards.

The Environmental Institute of Golf (EIFG):

Rhett Evans CEO also discussed the repositioning of the Environmental Institute for Golf. There have been concerns with the trend of decreasing member support of the EIFG. Only 14% of members contribute. Moving forward there will be a re-branding campaign which will begin at conference and show. This campaign will focus on creating a stronger tie between members and the EIFG. The current board of trustees has been restructured. There will be 7 members, 4 of which are GCSAA board members. EIFG will continue to fund programs administered by GCSAA. Including: Scholarships, Education, Outreach efforts & Research

Additional Discussion Items/Activities

- * It was announced that members wishing to apply for certification can now do so immediately upon attainment of Class A status. The additional requirements of one year as a Class A and 5.0 education points have been removed.
- * GCSAA continues to grow its collaboration with allied golf associations to strengthen the game of golf. It is imperative that representatives of those organizations on the facility level work in the same fashion to affect positive change as well.
- * Newly appointed chief operating officer Richard Konzem was introduced.
- * Candidates running for board and officer positions made presentations and hosted breakout discussions
- * An in-depth presentation on GCSAA government relations efforts revealed collaboration among staff, chapters and allied associations is having a positive impact.
- * Four chapters made presentations on programs they have instituted with the assistance of GCSAA resources in the areas of BMP development, media/public relations, strategic planning and government relations.
- * The GCSAA promotional package on the Golf Channel was well-received and supported as an important investment of funds.
- * Outlined were new features for Conference and Show, and the National Championship and Golf Classic including education programs, networking opportunities and cost-saving options available to attendees. Perhaps the biggest change in 2012 for the GCSAA National Championship & Golf Classic will be a chapter incentive program for golfers who have not participated in the tournament in the past two years. To that end the Chapter Team competition has been enhanced so that the winning team in both the net and gross category will now receive a percentage of the entry fees as a grant payable to the chapter.

Presentations Available Online

If interested the meeting’s full presentations are available online at: <http://www.gcsaa.org/Community/Chapter-Delegates-Meeting/Members/2011-Chapter-Delegates-Meeting.aspx>

Moving Ahead To Serve You Better

TORO
A Toro Partner

YOUR FRIENDS AT...
TURF EQUIPMENT
AND SUPPLY COMPANY
888-384-8676 • www.turf-equipment.com

See how equipment and agronomics can work together.

Only John Deere Golf offers both a full selection of golf maintenance equipment and soft goods from top name brands. Plus advice on how to pick the best of each for your course. Call us today.



Think Ahead.

Equipment Sales:
Finch Services, Inc., Hanover, PA
717-632-2345

Agronomic Sales:
Central PA: Matt Rayman,
717-648-5493

TURF UNIVERSITY CLASS OF 2010

| | | | |
|---|--|--|--|
| <p>Curalan® EG Fungicide, Emerald® Fungicide, Honor® Fungicide</p> | | <p>Basagran® T/O Herbicide, Drive® XLR8 Herbicide, FreeHand® 1.75G Herbicide</p> | |
| <p>Insignia® Fungicide, Iprodione Pro 2SE Fungicide, Trinity® Fungicide</p> | | <p>Onetime® Herbicide, Pendulum® AquaCap™ Herbicide, Pendulum® 2G Herbicide</p> | |
| | | <p>Pendulum® 3.3 EC Herbicide, Segment® Herbicide, Tower® Herbicide</p> | |

For diseases, weeds or pests, **BASF** is at the top of the class.

Contact Dave Schell at (410) 800-8762 or david.schell@basf.com.

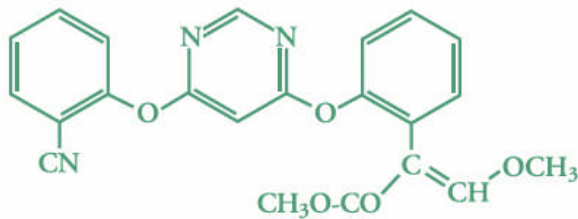
betterturf.basf.us



Always read and follow label directions. Basagran, Curalan, Drive, Emerald, FreeHand 1.75G, Insignia, Onetime, Pendulum, Segment, Tower and Trinity are registered trademarks and AquaCap and Honor are trademarks of BASF. ©2010 BASF Corporation. All rights reserved.

5 leading-edge solutions

featuring the top systemic fungicide in golf.



To learn more about Syngenta products, contact your local Syngenta territory manager:

Doug Rider
 215-260-9137
 douglas.rider@syngenta.com

Lee Kozsey
 215-796-0409
 lee.kozsey@syngenta.com

Syngenta is proud to be a CPGCSA Platinum Sponsor.



www.greencastonline.com

©2011 Syngenta Crop Protection, LLC, 410 Swing Road, Greensboro, NC 27409. Important: Always read and follow label instructions before buying or using these products. The label contains important conditions of sale, including limitations of remedy and warranty. Renown® is not currently registered for use in all states. Please check with your state or local extension service prior to buying or using this product. Headway®, Heritage®, Renown®, and the Syngenta logo are registered trademarks of a Syngenta Group Company.

TM

Platinum Sponsors



Gold Sponsors



Silver Sponsors



Bronze Sponsors



Supporters



Blue Ridge Peat Farms

Mark Your Calendars.....

**Winter Educational Meeting
February 2, 2012
West Shore Country Club**



The Green Sheet

1594 Cumberland Street #250
Lebanon, PA 17042
cpgcsa@hotmail.com
www.cpgcsa.org

Seasons Greetings!
