



The Green Sheet

Central Pennsylvania Golf Course Superintendents Association

Volume 17 Issue 5

Founded ~ April 11, 1939

August 2010

August Meeting

“Family Social Event”

Miniature Golf and Picnic

August 18, 2010

6:00 PM

Leisure Lanes

“Bowling and Golf Center”



August Meeting Hosts

Philip Easton is presently employed by Agrium as a direct Salesman of pesticides and fertilizers to Pennsylvania Lawn care and Golf Course end users. Phil graduated from Lycoming College, Williamsport PA, in 1977 with a BS Degree in Psychology. Previously he has worked for Truly Nolen Pest Control Inc., LESCO Inc. and McGregor Plant Sales. Phil lives in West Lampeter Township with his wife Beth and son Andrew.

Jim Byrne is currently employed with Turf Trade. Turf Trade carries a variety of products (fertilizers, wetting agents, fungicides, herbicides, insecticides, seeds and soils) and equipment (sprayers, spreaders, irrigation, etc.) to cover all of your turf needs. Their main facility, located in Mullica Hill, services the New Jersey, Pennsylvania, Delaware and Maryland (Eastern Shore and Baltimore vicinity) areas. Jim and his wife Lori reside in Lancaster county.

Mid-Atlantic USGA Update

The Other Shoe Has Dropped

By Darin S. Bevard , Senior Agronomist
July 16, 2010

A large portion of the Mid-Atlantic Region has experienced a long spell of dry, hot weather – burned-out rough, drought-stressed fairways, water supplies running on empty and temperatures hovering near 100 degrees.

While some areas received timely rains, many remain dry. Luckily, limited rainfall occurred with the high temperatures, which made the high temperature conditions tolerable until the other shoe dropped.



Torrential rains have occurred in many areas, especially the eastern half of the region. While cool season grasses tolerate hot weather very well, the combination of high temperatures and high humidity had predictable results - turfgrass stress and decline occurring on putting greens in these rain-soaked areas. *Poa annua* is the most affected to date.

Now is the time to be conservative on putting greens. Mowing heights should be raised, if necessary. Putting green mowers should be outfitted with a solid front roller if stress is noted on greens. Aggressive grooming practices should be suspended under harsh environmental conditions. These decisions are not arbitrary. If your grass is performing well, monitor it closely and make wise decisions, but maintenance can continue as normal. If any stress is noted, consider some practices to alleviate stress.

.....Continued on page 3.....

Inside This Issue

President’s Message	Page 2
Membership News	Page 3
Directions to Leisure Lanes	Page 3
CPGCSA Sponsors & Supporters	Page 7

President's Message

I would like to thank Todd and the entire staff at Lancaster Country Club for hosting the July joint meeting with Philadelphia. The course was very challenging as was the weather. We had a great speaker as Steve McDonald gave us an update as to what he was seeing in the field as major insect and disease problems. After a great lunch we took to the course. There were some great matches going on, even some very exciting comebacks in progress. A band of thunderstorms moved in, sending everyone in to the clubhouse. Many groups had between 2 to 4 holes left to play, with the duration of storms we decided to call the match. We enjoyed a wonderful reception with great food and drinks. Again, a big thank you to Todd and all the staff at Lancaster Country Club. I would also like to thank our sponsors for the day: Karen Hartman from DuPont, John Wiblehauser from Bayer, Thom Mahute and Brandon Maunz from Fisher and Son, and Doug Mottin from Mottin Golf Course Renovations. Brad Helcoski from Atlantic Irrigation sponsored golf prizes, and Phil Easton from Agrium Advanced Technologies and Bob Beyer from Harrell's provided the on course refreshments.

August we will be having a Family Social event at Leisure Lanes. This event will be no cost to members and their families as Jim Byrne from Turf Trade and Phil Easton from Agrium Advanced Technologies sponsor this event. Leisure Lanes is on Route 462 west of downtown Lancaster. Leisure Lanes offers 2 types of miniature golf, a natural grass course and an artificial course. We have reserved the deck at the miniature golf courses, where we will be grilling and having drinks. I hope you can join us for a fun filled evening.

Our next golf meeting will be at Country Club of York, September 20, where we have our Golf Championship and Annual Meeting.

Stephen J. Ludwig, CGCS

2010 Annual Meeting and Elections

The September 20, 2010 meeting at Country Club of York will be the Annual Meeting with election of officers and directors for the 2011 meeting year. Listed below are the nominations.

President:

Faron Stoops - Waynesboro Country Club

Tom Ocepek - Heidelberg Country Club

Vice President:

Barry Bollinger - Rich Valley Golf

Secretary/Treasurer:

Rebecca J. Matis - Golf Club at Felicita

Directors:

Brian Ahrens - Reading Country Club

Tim Hill - Foxchase Golf Club

If you are interested in running for the Board of Directors, please contact Rebecca Matis at 717-599-5703 or Steve Ludwig at stephen.ludwig@comcast.net. Nominations may also be made from the floor by a voting member in good standing at the annual meeting.

President/Bylaws/Social
Stephen J. Ludwig, CGCS
717-495-0679
stephen.ludwig@comcast.net

Vice President/Scholarship
Ryan Freed
717-324-0354
ryanafreed@comcast.net

Secretary/Treasurer
Barry Bollinger
Rich Valley Golf Course
717-691-8805
turfipa@yahoo.com

Past President/Scholarship
Matthew W. Strader
Hidden Creek Country Club
717-496-3039
stra6@comcast.net

Education/Career Development
Donald G. Dodson 2011
Hum Valley Golf Club
610-527-3307
ddodson392@aol.com

Alan FitzGerald 2011
LedgeRock Golf Club
610-777-9890
alan@ledgerockgolf.com

Golf
Matthew S. Turner 2012
Conestoga Country Club
717-394-5548
turnerm@conestogacc.com

Membership
Chad R. Oxenreider 2012
Flying Hills Golf Club
610-775-1903
grns mower@aol.com

Media/Public Relations
Curtis King 2010
Moccasin Run Golf Course
610-593-2600
cgking@zoominternet.net

Nominations
Rebecca Matis 2010
Golf Club at Felicita
717-599-5703
turfir103@aol.com

Affiliates
Jim Byrne 2011
717-471-5569
jbyrne@theturftrade.com

Phil Easton 2012
717-464-2707
peaston@agriumat.com

Executive Director/Newsletter Editor
Wanda S. Fry
717- 279-0368
cpgcsa@hotmail.com

PAST PRESIDENTS
George Morris
Ed Tabor
Riley E. Heckert
Richard T. Funk
Harry L. Latschaw
Daniel L. Snowberger
Charles A. Barley
Richard Wilt
Fred N. Baker
Richard J. Suttles
John J. Boyd
Y. Lewis Payson
C. William Black, CGCS
Dwight H. Brubaker
Byron F. Knoll
Michael Wilt
Charles H. Cadiz, CGCS
Kenneth R. Dietrich, CGCS
Michael C. Hair
Cameron G. Henderson
James N. MacLaren
David P. Portz, CGCS
John P. McCormick
David C. Weitzel, CGCS
Fred Heinlein
Terry L. Wueschinski, CGCS
Greg Borzak
Gregory C. Fantuzzi, CGCS
James W. Jones
William G. Wall
Robert Beyer, CGCS
Jeffrey L. Fry, CGCS
John A. Chassard
David M. Rafferty
Anthony P. Goodley, CGCS
Samuel R. Snyder, CGCS
John Dougherty
H. Jim Loke, CGCS
John L. Gehman
Theodore S. Zabrenski
Thomas C. Ocepek, CGCS
Daniel W. Achenbach
William E. Brooks
William P. Ramsey
Faron J. Stoops
John M. Colo
Daniel Brickley
Matthew W. Strader

Membership News

The following individuals have applied for membership into our association. If there are no written objections within the next seven days, they will be accepted into CPGCSA at the next meeting.

Chet Brubaker..... Class C
Assistant Superintendent, Lancaster Country Club

Matt Davenport..... Class AF
Landscape Architect, Watkins Architect Ltd

Michael J. Donahue Class AF
Territory Rep, Phoenix Environmental Care

Nevin R. Hess Class C
Assistant Superintendent, Lancaster Country Club

Michael Yelenosky Class C
Assistant Superintendent, Lancaster Country Club

We would like to welcome the following individual into our association.

Jeff Shoemaker Class AF
Account Manager, Finch Services, Inc.

If you know of anyone who is interested in membership into the association, please have them contact Chad Oxenreider (610) 775-1903 or Phil Easton (717) 464-3740.

Membership information is also available on the Central Penn website at:
www.epgcsa.org

Congratulations to:

Jon and Nicole Cuny on the birth of their son Drew Jon Cuny on August 12, 2010.

Directions to Leisure Bowling and Golf Center

Leisure Bowling & Golfing Center is one mile from Route 30, just West of the City of Lancaster. Heading Westbound on Route 30, take the Centerville Exit turn left off the ramp onto Centerville Road. Turn right onto Columbia Avenue (Route 462 West) and watch for Leisure on the left side. From downtown Lancaster, follow Columbia avenue (Route 462) West for 5 miles.

**3440 Columbia Avenue
Lancaster, PA 17603-4019
www.leisurelanespa.com**

USGA....continued from Page 1

Water management also is critical. With torrential rain, Mother Nature is in control of the water. When she isn't, minimize use of overhead irrigation to the extent that your resources allow. Hand watering is labor intensive, but when talking about the difference between survival and decline of the putting greens, labor must be allocated for this important practice. Hand watering allows the areas that need water to be addressed site-specifically without over watering other areas.

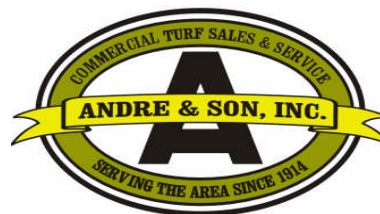
The next month will be difficult as turfgrass roots have been compromised. Disease pressure is extremely high. The goal is to keep the grass as healthy as possible even if some level of playability must be sacrificed. Pushing for green speed under current weather conditions may lead to rapid grass decline. Some golfers may be upset that the greens are a little slow, but all golfers will be upset if they are a little dead. Superintendents must make good decisions, and golfers need to respect them.

The Mid-Atlantic Region agronomists are part of your agronomic support team. If you have a question or concern, give us a call or send an e-mail. Stan Zontek (szontek@usga.org) and Darin Bevard (dbevard@usga.org) at 610/ 558-9066 or Keith Happ (khapp@usga.org) at 412/ 341-5922.

For Your Information

If you have any information that you would like included in the September newsletter, please call Wanda at (717) 279-0368 or e-mail to cpgcsa@hotmail.com

by
August 31, 2010



Rich Gdovin
Sales Consultant

Turf King Supplies & Contracting Services

17150 State Route 706
Montrose, PA 18801

Cell: 607.761.9465
Fax: 570.825.9267
rgdovin@andreandson.com
www.andreandson.com

July 27, 2010



WEATHER ALERT

TURF LOSS ADVISORY

Periodically, the agronomists of the Mid-Atlantic region send letters to USGA member courses on extraordinary weather conditions and turf loss related matters. The weather experienced the summer of 2010 has prompted this letter.

Our goal is to alert golfers and turf managers alike that this extended period of heat and drought followed by heat, humidity and thunderstorms has caused and probably will continue to cause turf stress and turf loss problems throughout the region. No two golf courses are alike. They all have different grasses, soils and golfer expectations. It is important that golf course superintendents use, “defensive golf course maintenance and management programs.” That is, be conservative. Pamper the grass. The turfgrass is under intense weather stress compounded by an increase in disease pressure. Be more concerned about plant health than green speed!!! There is an old adage in our industry, “slow grass is better than no grass.” This is not a joke. It needs to be taken seriously.

Suggested “defensive” management programs include:

- **Compress spray programs.** With heat, humidity and thunderstorms, fungicides do not last as long and disease pressure is greater. There is no better money spent than to protect the grass from disease.
- **Raise mowing heights and use sharp mowers.** This can help the grass survive.
- **Mow less/roll more.** The goal is to reduce mechanical stress to the grass plant.
- **Switch from grooved to solid rollers (and protect collars from the turning of mowers).**
- **Spoonfeed the grass.** Weekly sprays are best when applying light rates of fertility, iron (to keep the grass green) and growth regulators. Excessive grass growth depletes carbohydrates.
- **Air drainage.** On pocketed greens, prune limbs, use fans and generally keep the air moving. When you are hot, you stand in front of a fan. When the grass is stressed, it needs good air movement as well. Drier turf is also less prone to disease.
- **DO NOT OVER-WATER.** Hand water. Lightly syringe the turf with the nozzle never going past **horizontal**. Any mid-day watering should be focused on cooling the canopy. If you are wetting the soil, you are not syringing! Remember, you can always add more water but wet, saturated soil damages roots, increases disease and contributes to turf loss via the Wet Wilt Syndrome. If corrective watering needs to be done for dry spots, the extra water should be applied in the early morning or late in the evening. Do not over-water the grass in mid-day heat.
- **Surface aerate/vent the greens.** This allows the soil to breath, excess moisture to escape and roots to regrow which helps the grass survive.

In summary, be careful. This may be one of our hottest summers in decades. We all share the responsibility of keeping the turf on our golf courses as healthy as possible during this period of extreme weather. Again, be careful and have **realistic expectations for golf course playability**.

The Mid-Atlantic Region’s agronomists are part of your agronomic support team. If you have a question or concern, do not hesitate to give us a call or send an e-mail.

Glen Mills office: (610) 558-9066

Stan Zontek (szontek@usga.org) and Darin Bevard (dbevard@usga.org)

Pittsburgh office: (412) 341-5922

Keith Happ (khapp@usga.org)

Upcoming Events

- **November 16-18, 2010**
Penn State Golf Turf Conference,
Nittany Lion Inn, State College, PA
- **January 11-13, 2011**
Eastern Turfgrass Conference & Tradeshow
Crown Plaza Valley Forge, Valley Forge PA
- **January 27, 2011**
Northeastern PA Turf Conference
The Woodlands Resort, Wilkes-Barre, PA
- **February 7-11, 2011**
Golf Industry Show
Orange County Convention Center
Orlando, FL
- **February 22-24, 2011**
Western PA Turf Conference & Trade Show
Four Points by Sheraton Pittsburgh North, Mars, PA

Important Contact Information

Well, we made the move to South Carolina! So now, odd as it may seem Central Penn GCSA is now fully operational in the deep South. (Ok, maybe not quite fully, I am still searching for a few boxes!!)

Please make sure to update your files and the files at your club offices with the new address. I am using a mailing service to forward the mail, as to keep a PA address. The phone number remains the same, but we not longer have a fax line. The new contact information is:

CPGCSA
1594 Cumberland Street #250
Lebanon, PA 17042-4532

cpgcsa@hotmail.com

717-279-0368 - Office/Cell



EXPERTISE Included with every agronomic purchase.



We offer a comprehensive selection of industry basic manufacturer products, and LESCO products. Plus the expertise to help answer to help answer what will and won't work on your course. So call, and see how you can **Consider us part of your crew.**

JohnDeere.com/Golf



Agronomic Sales Rep

Matt Rayman, GSR 717-648-5493

A Word to Superintendents from the Membership Committee

Is your Assistant or other employee a member of CPGCSA? If not we have an offer for him or her. During the months of June, July and August the application fee of \$50.00 will be waived for all new applications.

As a growing organization we need new members with new ideas. We need new people to get involved to keep the association fresh. They are the future of golf in our area. You are the best person to promote CPGCSA to your Assistant or other employee because they value your opinion.

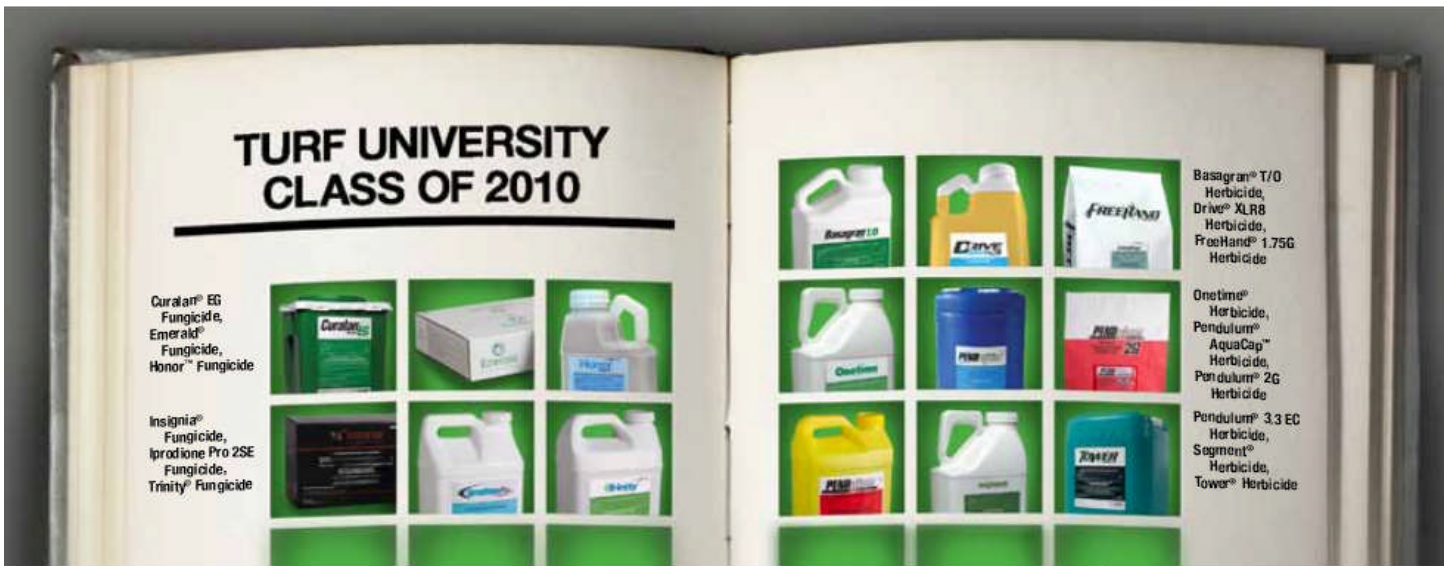
We ask you to reach out and help us gain new members. The same goes for any Superintendent that you may know who is not a current member.

Thanks for the help, please call one of us with any questions.

Membership Committee

Chad Oxenreider grnsmower@aol.com

Phil Easton peaston@agriumat.com



**For diseases, weeds or pests,
BASF is at the top of the class.**

Contact Dave Schell at (410) 800-8762 or david.schell@basf.com.

betterturf.basf.us



Always read and follow label directions.
Basagran, Curalan, Drive, Emerald, FreeHand 1.75G, Insignia, Onetime, Pendulum, Segment, Tower and Trinity are registered trademarks and AquaCap and Honor are trademarks of BASF. ©2010 BASF Corporation. All rights reserved.

**TIPS
FOR
A
BETTER
LIFE**

- Take a 10-30 minute walk every day. And while you walk, smile. It is the ultimate anti-depressant.
- Sit in silence for at least 10 minutes each day. Buy a lock if you have to.
- When you wake up in the morning complete the following statement, 'My purpose is to _____ today.'
- Eat more foods that grow on trees and plants and eat less food that is manufactured in plants.
- Drink green tea and plenty of water. Eat blueberries, wild Alaskan salmon, broccoli, and almonds
- Try to make at least three people smile each day.
- Don't waste your precious energy on gossip, energy vampires, issues of the past, negative thoughts or things you cannot control. Instead invest your energy in the positive present moment.
- Eat breakfast like a king, lunch like a prince and dinner like a college kid with a maxed out charge card.
- Life isn't fair, but it's still good.
- Life is too short to waste time hating anyone.
- Don't take yourself so seriously. No one else does.
- You don't have to win every argument. Agree to disagree.
- Make peace with your past so it won't spoil the present.
- Don't compare your life to others. You have no idea what their journey is all about.
- No one is in charge of your happiness except you.
- Frame every so-called disaster with these words: 'In five years, will this matter?'
- Forgive everyone for everything.
- What other people think of you is none of your business.
- GOD heals everything.
- However good or bad a situation is, it will change.
- Your job won't take care of you when you are sick. Your friends will. Stay in touch.
- Envy is a waste of time. You already have all you need.
- Each night before you go to bed complete the following statements: I am thankful for _____. Today I accomplished _____.
- Remember that you are too blessed to be stressed.

Platinum Sponsor



Gold Sponsors



Silver Sponsors



Bronze Sponsors



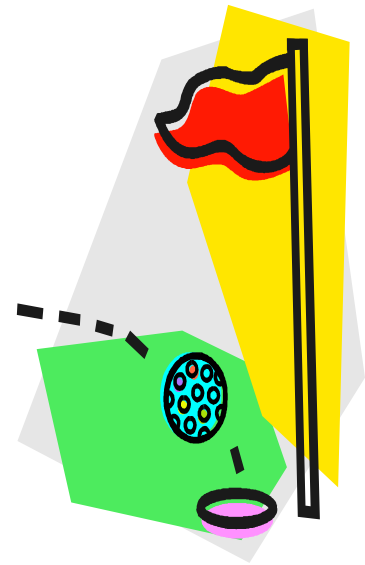
Supporters

Syngenta
Jon Cuny **Lee Kozsey**
(412) 953-2906 (610) 861-8174
Doug Rider
(215) 260-9137

Andre & Son, Inc
Rich Gdovin
17150 State Route 706
Montrose, PA 18801
(607) 761-9465

2010 CPGCSA Meeting Schedule

September 20	Country Club of York Golf Championship/Annual Meeting
October 5	Felicita Golf Course Super/Pro/GM/AF Tournament



Family Social at Leisure Lanes
Miniature Golf and Cook out
August 18, 2010
6:00 PM



The Green Sheet

1594 Cumberland Street #250
Lebanon, PA 17042-4532
cpgcsa@hotmail.com
www.cpgcsa.org

Inside This Issue

August 2010 Meeting Information
